

# WIRRAL COUNCIL

## WIRRAL SOUTH CONSTITUENCY COMMITTEE

18 JUNE 2015

<b>SUBJECT:</b>	<b>WIRRAL SOUTH IMPACT REVIEW 2014/15</b>
<b>WARD/S AFFECTED:</b>	<ul style="list-style-type: none"><li>▪ <b><u>BEBINGTON</u></b></li><li>▪ <b><u>BROMBOROUGH</u></b></li><li>▪ <b><u>CLATTERBRIDGE</u></b></li><li>▪ <b><u>EASTHAM</u></b></li><li>▪ <b><u>HESWALL</u></b></li></ul>
<b>REPORT OF:</b>	<b>CONSTITUENCY MANAGER (WIRRAL SOUTH)</b>
<b>RESPONSIBLE PORTFOLIO HOLDER:</b>	<b>COUNCILLOR GEORGE DAVIES NEIGHBOURHOODS, HOUSING &amp; ENGAGEMENT</b>
<b>KEY DECISION?</b>	<b>NO</b>

### 1.0 EXECUTIVE SUMMARY

1.1 This report provides a review of the work carried out by the Wirral South Constituency Committee throughout 2014/15. The report will breakdown all the elements of work carried out (grants funds, priority based projects etc.) and offer indication of impact on the residents of Wirral South. This report will also detail the amounts of spend in relation to each strand of work carried out.

1.2 The 2014/15 Wirral South Constituency Committee budget was as detailed below:

- £50K Wirral South Health & Wellbeing Fund
- £38,720.50 core budget rolled over from 2013/14 (allocated £10k per ward)
- £50K Core budget allocated to three main priorities
- £77,750 Road Safety Money
- £35K "Your Wirral" funding
- £10k "Love Wirral" funding

## 2.0 PRIORITY SPEND AND ASSOCIATED IMPACT

2.1 *Improved Open Spaces; to increase the number of green flag parks in Wirral South year on year and ensure accessibility is improved in each chosen location*

2.1.1 During the Wirral South priority setting session (9 April 2014) it was identified that although Wirral South had large amounts of open space the number of 'Green Flag' awards was low (when compared on a percentage basis with other constituencies). The importance of outstanding parks and open spaces and their contribution to the health and wellbeing of residents was noted. Agreement was made to rotate focus by ward each year and start in the wards that had no 'Green Flags' in situ.

2.1.2 Throughout 2014/15 Wirral South's Constituency Manager has met with representatives from the Wirral South Park's Team, including the Senior Manager of Parks and Countryside Services. Discussions were held in an attempt to highlight the most suitable location on which to focus the Committee's efforts throughout 2014/15. Based upon this discussion and a subsequent site visit it was decided that Mayer Park was the most suitable location based upon a number of factors, not least the existence of an enthusiastic and active "Friends Of" group plus the overall infrastructure being in acceptable condition.

On 6 August 2014 a representative group of Elected Members for Wirral South were brought together forming the 'Parks Priority Task and Finish Group'. At this meeting the proposal to focus upon Mayer Park in 2014/15 was discussed. Members agreed that this proposal was both acceptable and logical. To add context to this decision the main judging criteria for the Green Flag Award are contained below:

- A welcoming place
- Healthy, safe and secure
- Well maintained and clean
- Sustainability
- Conservation and heritage
- Community involvement
- Marketing
- Management

2.1.3 The 'Parks Priority Task and Finish Group' met once again in December 2014 and based upon further agreement a list of progress was presented to the committee in January 2015. A list of progress to date (at time of writing this report) is shown below:

- Park management plan revised
- Application for green flag submitted
- A brand new main entrance sign erected (Beb Cllrs Core Budget)
- A secondary entrance sign erected at Ellen's Lane entrance
- Lines of sight improved by reducing height of existing hedges (Friends)
- New flower beds dug and planted up (Beb Cllrs Core Budget)
- Dead trees removed (Parks)

- New litter bins throughout (Constituency Budget)
- Work carried out on offending vegetation in roof of Mayer Hall/Pennant House (Asset Management)
- Stonework repaired on Mayer Hall/Pennant House (Asset Management)
- Stumps removed (Parks)
- A new fence at Ellen's lane (Constituency Budget)
- Replacement of rose bed in Ormerod gardens (Beb Cllrs Core Budget)
- Edging of all paths throughout (imminent Friends)
- Disabled access swing installed (Constituency Budget)
- 'Legacy Kit' donated to Friends Group consisting of tools etc. (imminent Constituency Budget)
- New play equipment installed (teen see-saw and nest swing)

2.1.4 At the time of publishing this report the green flag judging has taken place but no formal decision has been received. Although it is impossible to predict the outcome it is accurate to state that the park has benefitted from the increased attention from the Constituency Committee. Local residents have commented on the improvements made and the friends group are happy with both the physical improvements and the heightened partnership working with the local authority. A further update will be provided to the Committee following the completion of judging/decision.

2.2 *Gaps in Youth Provision; to work with internal and external partners to identify and rectify any existing gaps in provision of youth services in Wirral South*

2.2.1 During the Wirral South priority setting session (9 April 2014) elected members voiced a collective opinion that youth provision was somewhat under resourced in Wirral South compared with other constituencies. For example; there were no opportunities to access one to one youth counselling services outside Birkenhead. Evidence also suggested that pockets of youth related ASB were also becoming established and that the Wirral South Constituency Committee were best placed to apply some localised and targeted funding in an attempt to address these issues.

2.2.2 Throughout 2014/15 Wirral South's Constituency Manager engaged directly with the Youth Support Team Manager for Wirral South in an attempt to produce a list of proposals to present to the committee. Based upon the key parameters of the above priority (2.2) the following proposals were presented to and agreed by the committee in October 2014:

- **Diversionsary Activities**  
2 x excursions to mountain biking facility in Delamere Forest for 14 young people to encourage engagement in focussed locations experiencing existing anti-social behaviour
- **Education in Theatre**  
20 x themed performance/workshops aimed at equipping young people with the tools to deal with both abusive relationships and bullying
- **Extension of 'The Lads' engagement programme**  
Doubling the provision for Wirral South from 14 to 28 for young Men completing the above development programme
- **One to One Counselling Services**

## Offering a one to one counselling service to young people within the Wirral South Constituency footprint until 31 march 2015

2.2.3 The above proposals cost a total amount of £10,567, just slightly more than two thirds of the Committee's youth budget for 2014/15. Impact reports from the various elements are included in this report (see appendix One, Two, Three and Four for detailed info). The infographic below (Figure 1) offers a snapshot of the impact achieved by the various constituency approaches to addressing the gaps in youth provision for Wirral South.

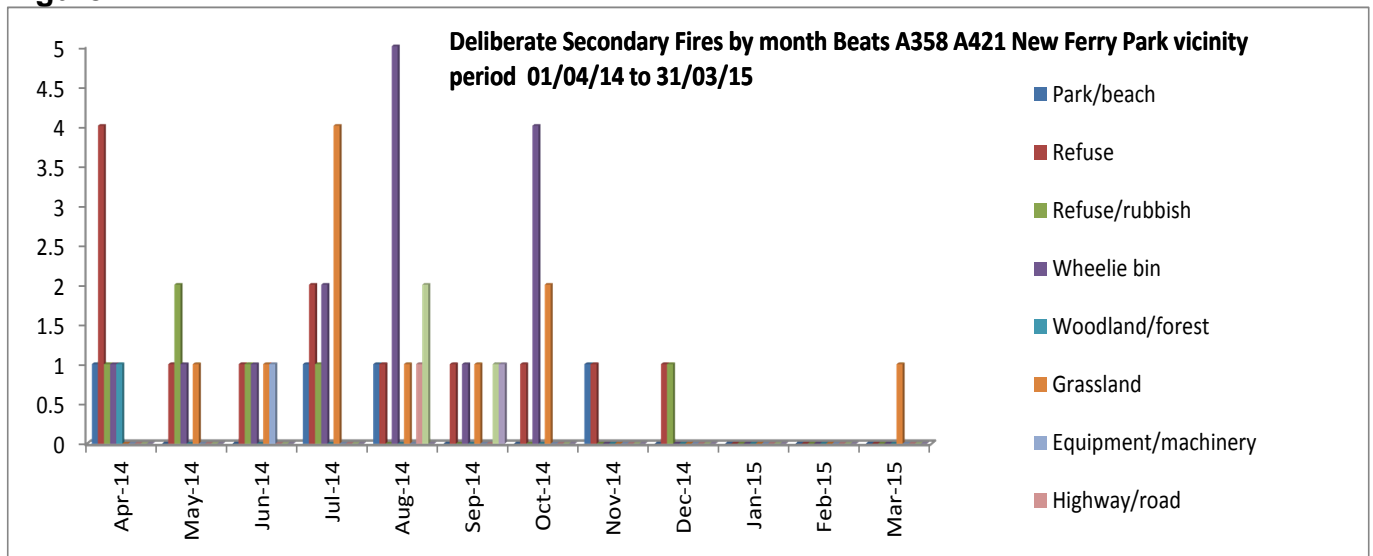
Figure 1:



2.2.4 One of the areas of focus for the constituency funded youth work was New Ferry Park. This location was experiencing higher levels of ASB than other areas in Wirral South, in particular a worrying trend for setting deliberate secondary fires.

Figure 2 below shows the incidents of deliberate secondary fires in the vicinity of New Ferry Park for the whole of 2014/15. The focussed outreach work began in this area following the October Committee in 2014.

**Figure 2:**



2.3 *Tackle Social Isolation; Identify the various groups affected by social isolation in Wirral South, establish the evident gaps in provision throughout the Constituency and aim to either support existing providers or commission a new piece of work*

2.3.1 Members of The Wirral South Public Service Board met on 4 September 2014 to discuss the opportunity of setting up “Dementia Friendly Communities” in Wirral South. Utilising existing evidence from the Wirral South Profile (produced by Public Health) and with support from the Alzheimer’s Society it was proposed at the Wirral South Constituency Committee 16 October 2014 that Heswall be recommended as a pilot location for this initiative.

2.3.2 Following the resolved recommendation (3.1.1 above) an open meeting was held in Heswall library 27 November 2014. This open meeting (entitled “Making Heswall a Dementia Friendly Community”) was well attended by a variety of community and partnering organisations. Initial pledges were made by many organisations in attendance and a plan for action in 2015 is soon to be developed.

2.3.3 Further meetings were held in Heswall and it was decided that the initial approach of this project should be to raise awareness and tackle stigma. In order to do this a number of Dementia Friends Sessions were held in Heswall throughout March 2015 (to find out more follow this link: <https://www.dementiafriends.org.uk/>)

The following (hour long) sessions took place in March 2015:

- Monday, March 2, 2pm and 3.30pm, Heswall Hall, Telegraph Road, Heswall.
- Wednesday, March 4, 2pm, Heswall Library, Telegraph Road, Heswall.
- Thursday, March 5, 6.30pm, Church Of The Good Shepherd, Telegraph Road, Heswall.
- Thursday, March 12, 6.30pm, Church Of The Good Shepherd.
- Monday, March 16, 3pm and 4.30pm, Heswall Hall

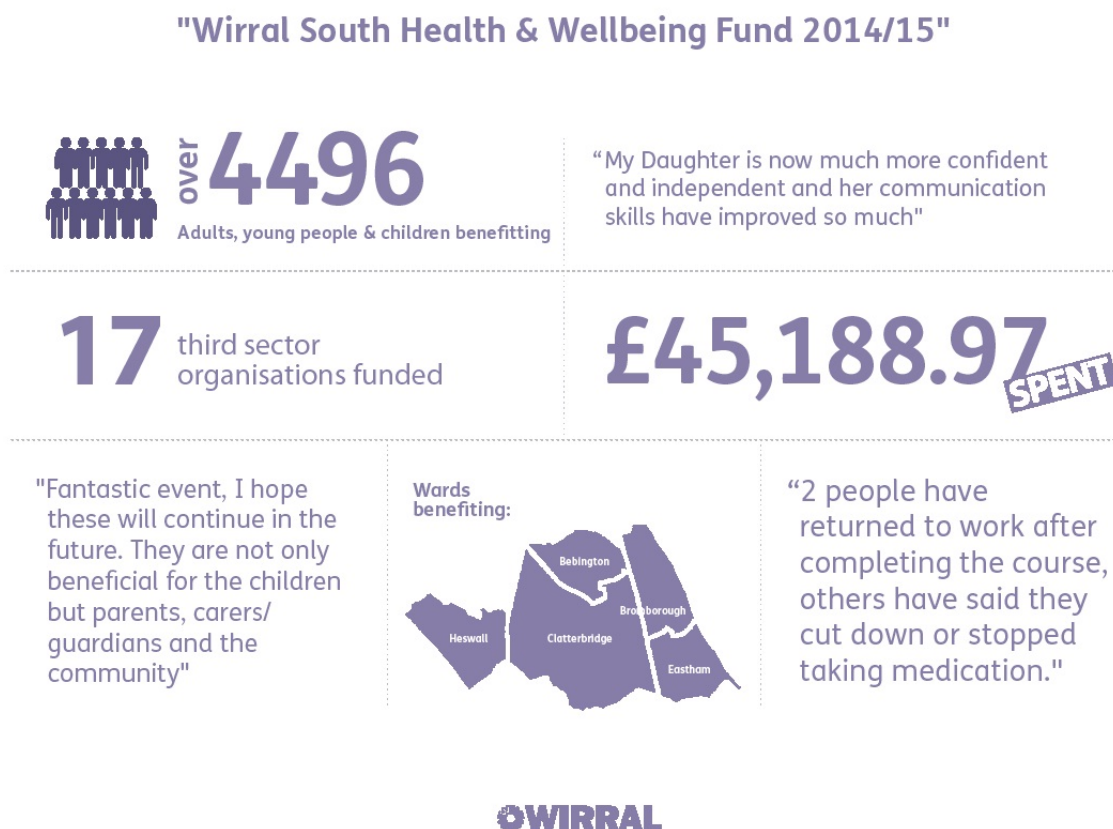
- 2.3.4 The pilot continues and a further meeting took place on Thursday 16 April 2015. This meeting discussed the various options for next steps to ensure the wider community (including businesses) are fully engaged.
- 2.3.5 The issue of social isolation is a particularly complex one. Social isolation affects a number of diverse strands within any one community. With this in mind it is proposed that a piece of commissioning work takes place to procure support for the Wirral South Constituency Committee to address social isolation in the future (see section 3.3 Wirral South Proposals report 2015/16).

### 3.0 WIRRAL SOUTH CONSTITUENCY COMMITTEE GRANTS PROGRAMMES 2014/15

#### 3.1 Wirral South Health & Wellbeing Fund

- 3.1.1 17 projects have been funded from the Wirral South Health & Wellbeing Fund during 2014/15. The total amount awarded was £ 45168.97, leaving £4,831.03 remaining.
- 3.1.2 At the first Wirral South Constituency Committee of 2014/15 (June 25) the above outlined allocation (4.1.1) was recommended and resolved. Payments were subsequently made to the approved 17 projects (see figure 3 below for outline of impact). Over 4496 residents across Wirral South have been directly affected by the Wirral South Health & Wellbeing Fund throughout 2014/15.

Figure 3:



## 3.2 *Your Wirral*

3.2.1 Your Wirral funding was devolved to the Constituencies Committees for 2014/15. It is a small grants programme that has been in operation since 2007. To be eligible for funding, applications had to fit within one or more of the seven themes (below), which were agreed by the Joint Working Group in line with the charitable objectives of the Community Fund Deed:

- i. Creating an attractive and safe environment
- ii. Contributing to community economic regeneration
- iii. Preventing crime or reducing the fear of crime
- iv. Providing employment and training for local people
- v. Benefiting local people who face discrimination
- vi. Improving community facilities
- vii. Engaging communities to improve quality of life

3.2.2 Wirral South has allocated almost the full amount of its £35,000 budget for 2014/15 (£48.91 carried over into 2015/16). Wirral South has also allocated £5,000 of its £35,000 budget for 2015/16 (see appendix Five for full details of funded organisations).

## 4.0 **INTEGRATED TRANSPORT**

4.1 It was outlined at Wirral South's first Constituency Committee of 2014/15 that £77,750 had been devolved to Wirral South to address Road Safety issues within the constituency area.

4.2 The "Local Transport Capital Funding/Integrated Transport Block (ITB) programme budget Task & Finish Group" for Wirral South met for the first time, Wednesday 13 Aug ( following Councillors attended: D Mitchell, C Muspratt, L Rowlands, T Pilgrim and J Walsh). This group discussed possible options for distributing the relevant budget and came to the following conclusion:

"Utilise some of the £77,750 (£10K suggested) to carry out a constituency wide project to future proof a number of Vehicle Activated Signs (VAS). The remaining amount to be split evenly per ward".

4.3 Delays in implementation (contractual, procurement and a small number of public objections to particular schemes) have meant that a significant amount of this budget will be carried over into 2015/16. Appendix Six details the various projects and their relevant stage of completion at the time of writing this report.

## 5.0 **REMAINING CORE BUDGET FROM 2013/14**

5.1 Over £38K of the 2013/14 devolved core budget for Wirral South remained and was carried over into 2014/15. Each ward was allocated £10k each and spend continued throughout the year. Further works have been programmed but not

actioned by the various services due to resource pressures. Appendix Seven shows the current allocated spend per ward.

## **6.0 LOVE WIRRAL**

6.1 The full budgetary amount of £10K has been carried over into 2015/16. The Love Wirral Task and Finish Group for Wirral South (established at the committee 22 Jan, 2015) has remotely agreed to allocate £2k per ward and lists of proposed projects have been compiled. Implementation will commence as soon as is practicable in 2015/16.

## **7.0 RELEVANT RISKS**

7.1 Failure to agree project spend expediently may result in a loss of funding allocation in future years.

## **8.0 OTHER OPTIONS CONSIDERED**

8.1 Careful consideration has been given to the best way to distribute this funding to help tackle the Constituency's priorities.

## **9.0 CONSULTATION**

9.1 Extensive online literature was available to both promote and explain the "Your Wirral Fund" and support was offered from Community Action Wirral to aid those applying. Elected members have been consulted via various task & finish groups.

## **10.0 IMPLICATIONS FOR VOLUNTARY, COMMUNITY AND FAITH GROUPS**

10.1 Both the "Your Wirral" and "Wirral South health & Wellbeing" funds offered a well needed injection of funds into the social sector within Wirral South.

## **11.0 RESOURCE IMPLICATIONS: FINANCIAL; IT; STAFFING; AND ASSETS**

11.1 This report has implications for the expenditure of budget allocated to Wirral South Constituency Committee.

11.2 Funding may assist in greater use of and/or access to community assets.

## **12.0 LEGAL IMPLICATIONS**

12.1 The arrangements will help the Council to deliver on the Localism Act 2011 and Public Services (Social Value) Act 2012.



### **13.0 EQUALITIES IMPLICATIONS**

13.1 Has the potential impact of your proposal(s) been reviewed with regard to equality?

Yes an impact review can be found at the link below (Progressing Neighbourhood Working). A specific EIA related to the grants fund itself will be carried out should the relevant recommendation be approved.

<http://www.wirral.gov.uk/my-services/community-and-living/equality-diversity-cohesion/equality-impact-assessments/eias-2010/chief-executives>

### **14.0 CARBON REDUCTION IMPLICATIONS**

14.1 Allocation of funds promoting localised services will have an impact on the Wirral South's overall carbon footprint

### **15.0 PLANNING AND COMMUNITY SAFETY IMPLICATIONS**

15.1 This report may have positive community safety implications dependent upon the allocation of spend determined by the Constituency Committee.

### **16.0 RECOMMENDATION/S**

It is recommended that:

16.3 Note the progress made by the Wirral South Constituency Committee throughout 2014/15.

### **17.0 REASON/S FOR RECOMMENDATION/S**

17.1 To enable the work of the Constituency Committee to be focused upon the needs of the local area and to ensure projects commence as expediently as possible.

**REPORT AUTHOR:** **Fergus Adams**  
Constituency Manager (Wirral South)  
telephone: (0151) 691 8428  
email: [fergusadams@wirral.gov.uk](mailto:fergusadams@wirral.gov.uk)

### **REFERENCE MATERIAL**

Wirral South Proposals report 2015/16

**SUBJECT HISTORY (last 3 years)**

<b>Council Meeting</b>	<b>Date</b>

Appendix One: "Tracks" Mountain Biking Project Impact Report

Appendix Two: Response Counselling services in the South Wirral area

Appendix Three: South Wirral LADS Project Report

Appendix Four: Creative Youth Development Report for Wirral South

Appendix Five: Your Wirral Funded Projects

Appendix Six: Integrated Transport/Road Safety Budget Update

Appendix Seven: Projected Spend of Carried Over 2013/14 Core Budget

## Appendix One: "Tracks" Mountain Biking Project Impact Report

### **South Wirral Outreach Team Mountain Biking in Delamere Forest.**

#### **Aim**

To engage hard to reach groups of young people and to reduce the anti-social behaviour (ASB) in the New Ferry area.

#### **Methodology**

South Wirral Youth Outreach Team targeted challenging groups of young people in New Ferry who have been causing ASB. During the summer of 2014 the outreach team were often met by verbal abuse from certain groups of young people which included being called "grasses." The young people thought that the team were stopping them from having fun and collecting personal details to inform the Police of their ASB. Engaging these groups was challenging but the team persevered. Initially the offer of the trip it was met with miss trust and the groups would not engage. The team targeted some of the ring leaders which eventually helped with signing other young people on to the trips.

#### **Outcome**

There were two mountain biking trips planned, one in January and one in February half term were taking groups of young people from New Ferry on the Saturday 24<sup>TH</sup> January and on the 28<sup>th</sup> February. 12 young people in all total took part in the trips with 8 young people did not turn up for the activities. Although these numbers seem small on the surface the impact of the trips and work the outreach team have been doing has been widespread. The team spoke to lots of young people about the trip and although not all turned up the stories that went back into the area made lots wish they had come along. Key young people from the groups that attended the trips gave the youth workers credibility and trust with the young people. Since the trips young people are more approachable often making contact with the youth workers to come over and discuss a variety of issues which has led to some targeted interventions.

#### **Conclusion**

*"The behaviour of the young people was impeccable and this was commented on by the TRAX team at Delamere. They said the groups were some of the best they had worked with. All the young people where polite and grateful with not one incident on both trips.*

*The help that it has given to our relationship with the young people can be measured by their attitude towards us as Youth Workers. We hope to capitalise on this in the future and develop further our relationships and impact on the Community."*

By Jason Chan South Wirral Outreach Manager

## Appendix Two: Response Counselling services in the South Wirral area

### **Overview**

In November 2014, a pilot project was launched to deliver counselling services in the South Wirral area. During the period from November to March 2015 the Response counsellor engaged with 25 unique individuals for therapeutic counselling, each receiving on average 6-8 sessions. Counselling sessions were delivered either through regular and planned one hour sessions or via a weekly 'drop-in' service, which can be accessed as and when required by the young person.

Referrals to the counselling service came from Response, School, GP, and South Wirral Youth Hub 'Drop-in'. The age of young people accessing the service are 12 to 17 years old. The two venues used for this project were Bebington Children's Centre and South Wirral Youth Hub.

The presenting issues included - Relationship issues; low self-esteem; Anger; self-harm; bereavement; low mood/depression; low confidence; learning difficulties; suicidal thoughts; self-image; stop smoking; bullying.

Response engaged with 68 young people to give advice, guidance and support on a weekly basis or as and when required at the Youth Hub. Response also delivered brief interventions, including advice on further support, to young people who attended the productions delivered by Wirral Youth Theatre.

### **Outcomes & Impact**

The impact of counselling has included:

- A young person feeling more able to talk more about feelings and does not hide "real self" from the world.
- Young person has found alternative coping strategies to self-harm and has reported self-harm has reduced, and feeling more positive about the future
- Young person feeling more confident to make a new circle of friends and take up new hobbies as had previously felt isolated and unattached.
- Improved relationships at home with mum and siblings. Accepting self and attendance at school improved. Sleep improved with increased energy, concentration. Increased confidence and made new friends.

### **Case Study 1: Bebington Children's Centre**

- Young Female aged 15
- Presented to the GP as was self-harming by cutting wrists, she was feeling angry, stressed and sad. GP suggested she attend Response for counselling.
- Young person attended 4 counselling sessions and talked about feelings of loneliness as doesn't feel accepted by society & 'not feeling good enough' Spoke about 'scary' suicidal thoughts at night when can't sleep, this affects attendance at school, and is often too tired from lack of sleep to attend.

- Worked on self-esteem, special qualities and focused on young person recognising what she's good at and being kind to self as well as developing relaxation techniques.
- YP attended last session and entered room by saying 'I'm back'. YP was now sleeping better which has increased her motivation & concentration in school. Attendance in school has improved and YP has been able to make new friends which has increased confidence and she is now looking forward to the future. Comment from YP following evaluation ***"all of this change from talking - Amazing!"***

### **Case study 2: South Wirral Hub – 'drop in'**

- Young male aged 17
- Presented at South Wirral Hub 'drop- in' as was struggling with anger and finds it hard to control anger at home with Mum which is causing problems with the relationship and may result in him leaving home.
- YP referred to Response housing team for advice as under pressure to move home.
- YP uses drop-in service at South Wirral Hub when feels the need to. He has attended 5 times during Jan-Mar 2015 and uses the space to explore feelings as he recognises that he keeps these inside a lot and looks after others more than himself – working on self-esteem to improve this. Also working on anger management techniques in sessions.
- YP likes the flexibility of the drop in service and also knowing that there is a counsellor he can talk to on a weekly basis, if needed, as this helps him feel supported especially at this time of a lot of change and uncertainty.
- YP open to Response housing service and family accessing support through 'Team Around the Family'. YP is happy living with Dad at present.

Below are some comments from individuals whom have accessed the service:

***"It's great I now feel I have got somewhere to come when I need to talk to someone, I'll definitely use the drop in service"***

***"Don't usually talk to anyone about how I'm feeling so being able to talk has helped me put things into perspective"***

***"I feel this is a space I am able to speak and explain how I feel"***

***"I'm getting to know myself better; I'm beginning to like myself"***

***"I now realise I ignore the good bits about me – there is lots of good things"***

***"It's been a journey"***

***"I never knew counselling would help me"***

***"I feel in a good place now"***

***"I'm beginning to accept me"***

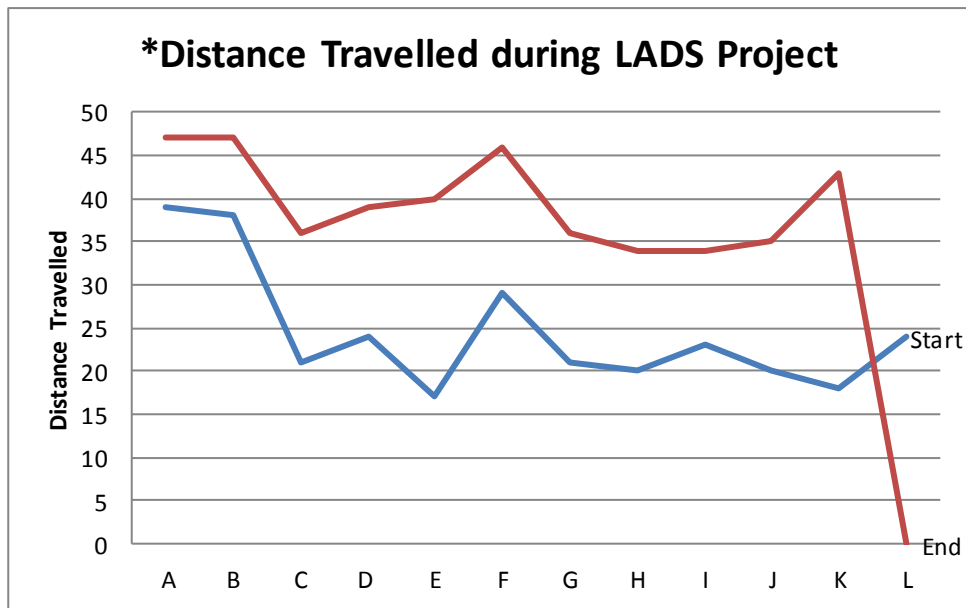
***"I can finally sleep better, it's changed my life"***

A mum of young person reported that young person has made a real change since coming to counselling and can't believe that she is the same girl.

**Recommendations**

- As part of the exit strategy, Response will work with Youth workers to bring young people to Response so they are aware of services available to them should they need to access in the future
- The pilot project will end at the end of May 2015, and time is given to review and evaluate the project

## Appendix Three: South Wirral LADS Project Report



*\*Each young person filled in a distance travel tool at the beginning and end of the project.*

*This tool is called the Star. It has 10 points, each point covers a subject area :-*

*Relationships*

*Home Life*

*Alcohol*

*Risk Taking behaviour/Personal safety*

*Using substances*

*Social isolation*

*Confidence and self esteem*

*Sexual health*

*Resilience*

*Aspirations*

*These are scored out of 5 (5 being really positive 1 being negative or doesn't have an understanding).*

Young Person	Start	End
A	39	47
B	38	47
C	21	36
D	24	39
E	17	40
F	29	46
G	21	36
H	20	34
I	23	34
J	20	35
K	18	43
L	24	DNF

Topics covered in LADS project:

- Social Isolation
- Using Substances
- Risk taking behaviour
- Alcohol
- Home Life
- Aspirations
- Relationships
- Sexual Health
- Confidence
- Resilience

Young People's Feedback:

'The project helped me to look at how drugs and alcohol can hurt me and how it can make me act stupidly and in a dangerous way! We also talked about how we need to respect each other all of the time!'

'The trip to Oakland's was great! I was quite scared in the mine, when we had to slide down a big cliff. But I am glad I done it and would really like to do it again.'

'The lad's project was very enjoyable for me and I learned a lot. The good things I learned was about relationships that I have with my friends and family and that relationships are not just with my girlfriends.'

'From the project I found out how bad smoking is for your health and that keeping fit and eating healthy is very important. I found out a lot from, Adam, Naz and Kev and they were great fun at Oakland's.'



'I have taken so much from the sessions we done in the lads project. The fact that I got to organise and deliver some of the topics helped me a lot. The trip to Oaklands helped me realise that I want to work in outdoor ed.'

Report:

The LADS project at South Wirral Youth Hub saw young people from varying referral organisation's come together to engage in an 8 week programme looking at all areas listed above. The referral organisations were South Wirral High School, Family Support\Gateway, South Wirral Youth Hub and South Wirral Outreach Team. There were initially 15 young people on the course with 3 young people dropping out early on and 1 dropping out half way through. This left us with 11 young people completing the course right through to the Oakland's residential. The Young people were given a distance travelled tool looking at the 10 areas listed above. This was completed at the start and end of the course. The lower the number the less awareness/development they had in that area. This collated, as a whole, shows that all young people had a positive distance travelled throughout the project and gained awareness and personal development from the LADS project interventions. The young people gave positive feedback through evaluation as can be seen from some of the quotes provided.

## Appendix Four: Creative Youth Development Report for Wirral South

Creative Youth Development were funded by South Wirral Constituency to deliver five performances each, of two existing theatre education packages, (total of 10 performances to young people across Wirral, at 5 outreach venues in South Wirral.

The two pieces were:

- **'If You Loved Me You Would'** (IYLMYW)– a play, which explored healthy and unhealthy relationships, and the spectrum of relationship abuse
- **'Because'** – an anti-bullying performance and interactive workshop, which explores a range of bullying scenarios and the consequences of bullying behaviour, originally 15 minutes long this was redevised to create a longer 40 minute piece.

The packages were commissioned to be delivered by Last Minute Theatre Company (LMT). LMT is also an in-house theatre company that provides a progression route for young people wishing to gain experience in delivering issue based theatre and peer education. Three of the performers who were recruited had been members/young people from WYT/CYD, and the technician who supported the Because /IYLMYW tour had also originally been a member and young person with the CYD tech team.

5 venues in South Wirral were identified to deliver the performances to:

- **South Wirral Youth Hub (Eastham)**
- **Jireh church**
- **Bebington Youth club**
- **Bromborough Civic Centre**
- **Heswell Hall**

### What happened?

#### Because:

- Creation and devising of a new 40 minute piece exploring 4 key scenarios about bullying and the consequences of bullying behaviour, including homophobia, CSE and the risks of taking and sharing inappropriate images, consequences of bullying behaviour and the law
- Rehearsal over 4 weeks
- Partnership work with Bullybusters to make sure content and interactive activities current, correct and relevant
- The use of modern technology as a way to engage young people, the creation of interactive Q&A, using voting pads to answer questions. Young people were able to participate during the performance and after each trigger scenario. The voting pads were loaned by anti-social behaviour team
- Learning could be tested and measured using the Quizdom package, this enabled us to have interactive questions, and at the same time record the results of each performance/school/youth group and measure learning. We were able to develop a comprehensive picture of young people's understanding and learning and the culture towards bullying, by capturing individual responses to questions.

- We were able to get up-to-date stats about attitudes and experiences of young people towards bullying and in particular their personal experiences of bullying, for example  
*Question: 'I have been bullied in my life: never / a bit / a lot / all the time'.*  
This material was also useful for hosting organisations to get a picture of what was going on with their young people, and where they could offer support, and/or educate further.
- The performances were followed with a Q&A session for young people, offering an opportunity to ask questions about the issues, where to get help, the process etc. There were always many questions from young people, particularly around whether the actors had experienced bullying and how they had dealt with it.

### **IYLMYW:**

- Originally re-scripted to a smaller cast of 6 in 2014, the script had to be rewritten again, and reduced to 5 cast members, when one of the company left for a full time job
- Re-rehearsing of play
- Adapting set and tech to make it portable for outreach tour

A counsellor from Response accompanied all of the South Wirral outreach tour performances of IYLMYW, and 'Because'. Their presence had been vital during the in-house productions of IYLMYW, to support individuals who were experiencing relationship abuse, who had witnessed it, or who knew someone who was going through it. The counsellor was able to offer immediate counselling and then sign posting to Response, or other agencies for further support.

### **What were the outcomes of the work?**

- 10 outreach performances in community venues across South Wirral

Audience numbers varied depending on the location of the venue. The performances in the Bebington youth club, the Jireh church and South Wirral HUB were best attended and this was probably because there were established youth groups there to attend.

***Audience numbers, all audience were age appropriate and between 11-19 years old:***

#### **Eastham Youth Hub:**

- IYLMYW 21 MALE / 22 FEMALE
- BECAUSE 12 MALE/16 FEMALE

#### **Bromborough Civic Hall**

- IYLMYW 8 FEMALE
- BECAUSE 8 FEMALE

#### **Jireh church**

- IYLMYW – performance cancelled due to confusion over booking of venue, and premises not available.

***Another theatre education piece will be done in 15/16 to make up for this.***

- Because – 13 MALE / 16 FEMALE

### **Bebington Youth Club**

- BECAUSE – 25 MALE / 20 FEMALE
- IYLMYW – 9 MALE / 14 FEMALE

### **Heswell Hall:**

BECAUSE – 2 MALE / 4 FEMALE

IYLMYW – 2 MALE / 4 FEMALE

### ***TOTAL numbers of young people who saw productions:***

IYLMYW – 80

'Because' - 76

Specific Capability areas

### **PARTICIPATION:**

- A young dynamic cast of actor/facilitators were able to relate to other young people and deliver key messages in a credible and engaging way. They were able to motivate their audiences, challenge inappropriate responses, answer questions and offer guidance on the issues raised
- Through performance they were able to demonstrate inappropriate behaviour, oppression of others, raise awareness and help understanding, about the impact of an individual's actions and behaviour

### **Extrinsic outcomes:**

- Two high quality TIE pieces successfully delivered to young people aged 11+, in appropriate venues which helped to reduce risk taking behaviour and build resilience
- Positive engagement and participation of young people who attended, using modern technology and theatre
- Current and live data captured about young people's opinions, understanding and experiences of bullying. This information can be shared with schools as partners to create safer communities and tackle bullying as an issue
- Both performances were seen as a starting point for conversations with young people about personal safety, and the impact of bullying or controlling behaviours
- Positive partnership work with Bullybusters, Response, the Police, Safeguarding, schools, youth workers, ASBT, outreach community venues including youth clubs and the church
- Diverse groups of young people worked with including those who are severely disabled, socially excluded, emotionally vulnerable, or experiencing mental health difficulties.
- youth work support for personal issues which came out during the process
- positive impact on health and well-being as a result of being involved in the project
- improved confidence and self-esteem
- Participation in performances and facilitation of workshops and discussion

**Intrinsic outcomes:**

- The project links participants to the ECM outcomes to enjoy, achieve, participate, stay healthy, stay safe and make a positive contribution
- improved communication skills
- improved group work and team work skills
- improved confidence and self esteem
- high self-efficacy
- emotional resilience
- strategies to cope with bullying, including where to get help
- opportunities to develop creativity and self-expression
- opportunity for progression and integration into CYD provision
- improved understanding of the arts and performance
- reduced risk taking behaviour
- improved health and well being
- participating in positive activities
- improved social skills

**What impact did the event have on participants or their community?**

Although evaluation forms were prepared for the groups it proved very difficult to get young people to complete them, mainly due to them losing part of their 'club night' to the productions, and as soon as the play/workshop was finished they returned to their club night activity. Young people, did however stay the duration of the performances and youth workers have reported back that they have gone onto have very positive conversations with their groups about the issues raised in the play

Verbal feedback was very positive, with many young people indicating it was their first experience of seeing 'a proper play'. Several young people came and talked to the cast afterwards about the issues in the play.

The Quizdom results for each venue/youth group, for 'Because' anti bullying piece are available and gives a picture of young people's attitudes to bullying.

## Appendix Five: Your Wirral Funded Projects

ID	Organisation name	Amount awarded	Budget Code	Ref	Ref
A478493	New Ferry Butterfly Park	2,500.00	B7554	R499	46500
AF79998	Heswall Arts Festival	2,500.00	B7554	R499	46500
AF81280	1st Bromborough Boys' Brigade	2,500.00	B7554	R499	46500
AF81317	Heswall & District Business Association	2,500.00	B7554	R499	46500
AF80573	Jireh Community Project	2,475.11	B7554	R499	46500
AF81135	The Residents of Brimstage Manor Nursing Home	840.00	B7554	R499	46500
AF81440	Bebington Village Retail Association	2,500.00	B7554	R499	46500
AF81250	Bebington Park Bowling Club	2,500.00	B7554	R499	46500
AF81443	SUEvivor Stroke Support	2,498.61	B7554	R499	46500
AF81522	Eastham Community Centre Limited	2,300.00	B7554	R499	46500
	Round Two:				
AF85421	Big Heritage CIC	2,357.00	B7554	R499	46500
	Round three				
AF90023	Bromborough Village Community Association	2,500.00	B7554	R499	46500
AF92543	Wirral Autistic Society	2,491.09	B7554	R499	46500
AF88406	Higher beb FC	2,490.00	B7554	R499	46500
AF88182	Friends of Dibbensdale	2,000.00	B7554	R499	46500
	<b>Total</b>	<b>34,951.81</b>			
	1st round of 2015/16				
AF80069	Heswall Hall Community Trust	2500	B7554	R499	46500
AF92333	5th Heswall (Methodist) Scout Group	2500	B7554	R499	46500
	<b>Total</b>	<b>5000</b>			

## Appendix Six: Integrated Transport/Road Safety Budget Update

Constituency Committee	Location	Ward	Issue/ Proposal	Estimated Cost	Est Spend 14/15	Slip to 2015/16	Responsible Officer	Status
Wirral South	All ward areas	All	Upgrade a number of VAS speed indicator devices to use SD card technology	£10,000		£10,000	DJK	Advertised: No objections received Issue Instructions to contractor
Wirral South	Teahoy Lane / Kings Lane	Bobington	Introduction of pavement parking TRO	£4,300	£4,300		DJK	Advertised: No objections received Issue Instructions to contractor
Wirral South	Brookhurst Ave	Clatterbridge	Speed indicator device	£7,000		£7,000	PC / DJK	With Procurement
Wirral South	Brookhurst Ave/Brookhurst Rd	Clatterbridge	Speed indicator device	£7,000		£7,000	PC / DJK	With Procurement
Wirral South	A41/Bridle Road, Eastham	Eastham	30mph gateway (roundel) road marking	£400	£400		LB	Design in progress advertising not needed
Wirral South	Eastham Rake	Eastham	Introduction of parking restrictions	£2,000		£2,000	PB	Advertised - Objections received Refer back to Constituency Ctte & Highways Panel
Wirral South	Paisley Avenue, Eastham	Eastham	Dropped kerbs	£1,600		£1,600	GR / Design Team	Surveys in progress
Wirral South	Ronfrow Avenue, Eastham	Eastham	Dropped kerbs	£1,600		£1,600	GR / Design Team	Surveys in progress
Wirral South	Berwick Avenue, Eastham	Eastham	Dropped kerbs	£1,600		£1,600	GR / Design Team	Surveys in progress
Wirral South	Selkirk Avenue, Eastham	Eastham	Dropped kerbs	£1,600		£1,600	GR / Design Team	Surveys in progress
Wirral South	Mill Park Drive	Eastham	20mph speed limit restrictions	£3,800	£3,800		CA / W / LB	Advertised: No objections received Issue Instructions to contractor
Wirral South	New Ferry Road	New Ferry	Speed indicator device	£7,000		£7,000	PC / DJK	With Procurement
Wirral West/ Wirral South	Whitfield Lane / Downham Road North	Pensby & Thingwall / Heswall	Introduction of 20mph speed limit on residential roads adjacent to Heswall Primary School.	£16,300		£16,300	CA / W / LB	Advertised - Objections received Refer back to Constituency Ctte & Highways Panel

Appendix Seven: Projected Spend of Carried Over 2013/14 Core Budget

Ward	Projected Spend
Bebington	£9,201.05
Bromborough	£9,812.50
Clatterbridge	£5,695.79
Eastham	£10,090.49
Heswall	£9,524.76
Total	£44,324.59